

LOVELY II™

ST Near-Infrared Handpiece for Deep Dermal Heating

Safe, Painless, Non Ablative Skin Tightening and Remodeling at the Speed of Light

The Lovely II skin tightening (ST) handpiece lights the way for breakthrough innovation in non-invasive skin remodeling and skin tightening procedures. The near infrared ST handpiece affects the dermis while the epidermal temperature is safely maintained without the need for complex and costly cooling means.

High efficacy is achieved through the use of an ideal light spectrum in the near infrared, coupled by precise fluence levels, which result in deep dermal heating that effectively induces neocollagenesis deep beneath the epidermis. The ST Handpiece's large spot size (6.4cm²) cuts down procedure time to a matter of minutes, and the ergonomic design enables precision in the treatment of any area. The ST handpiece indications are to treat facial laxity of the cheek and jowls, abdomens, underarms and legs. Patients experience no pain or discomfort, with no downtime, analgesia or need for medication.

The Best Light-Based Technology for Skin Tightening

The Lovely II ST Handpiece uses near-infrared light to achieve ideal deep dermal heating. The optimized parameters (spectrum, spot size, fluence and repetition rate) provide uniform energy distribution and effective targeting lipids, water and hemoglobin without damage to the epidermis. Furthermore, the optimized parameters enable achieving the necessary heat buildup in the target area needed to induce neocollagenesis, while eliminating the need for cooling before, during or after the procedure.

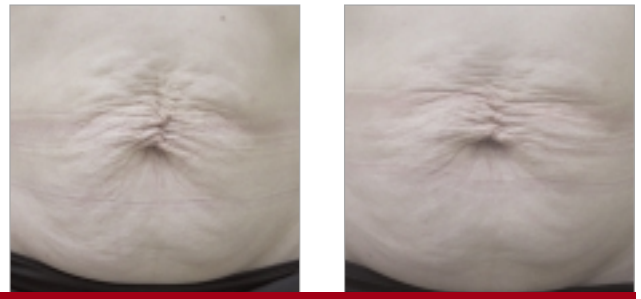
The ST near-infrared Handpiece joins the Lovely II's existing range of handpieces to offer unbeatable benefits. It can be used synergistically with LEO handpieces (i.e., 420, 540nm) and near-infrared laser handpieces (i.e., 1064 and 1320 nm) to treat various indications where increase in the temperature of the dermis such as acne and acne scars, may enhance clinical outcome.



LOVELY II™

A Spectrum of Benefits

- The most advanced light-based technology for unbeatable results and satisfaction.
- Ideal therapeutic optical window and treatment parameters for skin tightening and remodeling with no need for epidermal cooling.
- Safest and painless procedure without adverse side effects or patient downtime.
- Adjustable fluence and exposure durations parameters allow flexibility for treating a wide variety of indications and skin types.
- High patient throughput - large spot size and ultra-fast repetition rate enable treatment of any body part within minutes.
- Comfortable, ergonomic design and user friendly interface for fast, fatigue-free procedures and maximum operator comfort.
- Combination therapy - easily use with other Lovely II handpieces to enhance and improve clinical outcome in a range of indications.
- Significantly lower cost of ownership, maintenance and cost per pulse vs. most other systems on the market.
- Immediate action - Plug&Play technology with no downtime or need for system configuration when switching between hand pieces.



Abdomen skin redundancy before and after 4 biweekly treatments

This handpiece is just one of the Lovely II systems family of light and laser handpieces. These handpieces are fully interchangeable – each connects to the Lovely II system seamlessly and effortlessly and is ready for use in a matter of seconds with no need for programming, adjustments or operator configuration, as the pulse width and repetition rate are preprogrammed by the system according to the intended use. This unique feature enables the Lovely II system to easily grow with your practice and needs in the most cost-effective manner available.



■ Technical Specifications

Light source:

Spectrum:

Energy Density (Fluence)

Max Average Power(Watts)

Treatment Area (Spot Size)

Exposure Duration (Sec)

Pulsed Light

Near-infrared

35J/cm² - 105J/cm²

50W

40x16 mm (6.4cm²)

5, 10, 15

■ System Specifications

Electrical

100-120 VAC, 5A, 50/60Hz

220-240 VAC, 5A, 50/60Hz

Weight

Dimensions (W x D x H)

Cart* Dimensions (W x D x H)

*optional

System - 88lbs. (40kg), Cart* - 77lbs. (35kg)

26" x 18" x 16" (65 x 45 x 40 cm)

22" x 22" x 30" (55 x 55 x 75 cm)



Msq (M²) Ltd.

7 Haeshel Street, Caesarea Industrial Park, Caesarea 38900, Israel

Tel: +972-4-627-5357

Fax: +972-4-627-5368

e-mail: info@msq.co.il

web site: www.msq.co.il